



**AGILITY 1x30 HUNTING & SHOTGUN  
DOT SIGHT  
USER MANUAL**



[www.fire-field.com](http://www.fire-field.com)

**FF26030 / FF26031**



4. When test firing a rifle to check the point of impact relative to windage and elevation adjustments, firing from a shooting rest will help eliminate shifting during firing.
5. Be sure to use factory-loaded ammunition of the same bullet type, weight, and, preferably, lot number when sighting in the red dot sight.

## **FIREFIELD WARRANTY**

Please visit [www.fire-field.com](http://www.fire-field.com) for warranty details and information.

# **AGILITY 1x30 HUNTING & SHOTGUN DOT SIGHT**

Enabling quick and easy target acquisition, this 1x30 tactical red dot sight is ideal for target shooting and hunting at close distances. A choice of a red or green illuminated dot reticle allows shooters to utilize the color best fit for their shooting scenario, while multiple reticle options provide the ultimate user preference. The Agility's compact, yet robust design keep weight under 10 oz. and aid in shockproof, fog proof and IPX5 weatherproof ratings. This sight is also parallax corrected, providing precision in heart-pounding situations. An operating time of 12-440 hours, depending on setting, is achieved from one CR2032 battery. Flip up caps protect the Agility 1x30 when not in use. Included are battery and lens caps.

Ideal for target shooting and hunting of all kinds, the parallax corrected Agility 1x30 Red Dot Sight is designed specifically for use on shotguns. A perfect close-range sight for quick target acquisition, the Agility features a shotgun mount compatible on Remington 870, 1100 and 1187 models. Multiple reticle options and the choice of red or green reticle illumination allow ultimate shooter preference for different shooting scenarios. Lightweight and extremely durable, the Agility only weighs 10.8 oz. with mount and provides IPX5 weatherproof, shockproof and fog proof protection. 12-440 hours of operating life is achieved using 1 CR2032 battery. The Agility utilizes flip up lens caps to protect the glass when not in use.

## DIAGRAM FOR FF26030

- 1) Objective lens
- 2) Eyepiece
- 3) On/off switch
- 4) Reticle adjustment
- 5) Mounting screw
- 6) Elevation/windage adjustments
- 7) Battery cap
- 8) Len covers



## MAINTENANCE

Proper maintenance of the red dot sight is recommended to ensure longevity. It is recommended that when the riflescope becomes dirty that it is wiped down with a dry or slightly damp cloth. Blow dirt and debris off all optics and then clean lenses with a lens cleaning cloth. No further maintenance is required.

## WARNING

Do NOT disassemble the red dot sight for any reason, as this will void the warranty and could be hazardous. Any internal work should be handled by the manufacturer. CAUTION: Use of controls or adjustments or performance of procedures other than those specified herein may result in hazardous radiation exposure.

## TROUBLESHOOTING

Never ship back a product without getting proper authorization beforehand. Doing so could result in losing the riflescope due to a multitude of reasons, i.e. sending it to the wrong address and other problems associated with unexpected packages.

2. Check that the firearm's mount is securely attached. Also, verify the red dot sight is mounted securely to the rifle. If there is any shifting, retighten the mounting system according to the mounting instructions but do not over tighten.

## OPERATING THE ON/OFF SWITCH

In order to activate the red dot sight:

1. Locate the on/off switch (3).
2. Rotate the adjustment switch to the desired illumination setting of 1 through 5.
3. After use, turn the switch to the off position marked by “R” or “G”.



## DIAGRAM FOR FF2603 I



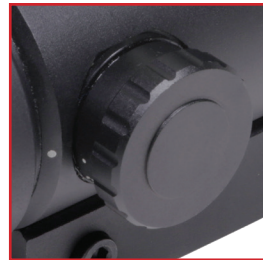
## TECHNICAL SPECIFICATIONS

Model	FF26030	FF26031
Reticle type	Multiple	Multiple
Reticle color	Red and green	Red and green
Brightness settings	5	5
Objective aperture (mm)	30	30
Eye relief (mm)	unlimited	unlimited
Parallax free @ (yds)	20	20
MOA adjustment (1 click)	1	1
Windage (MOA)	120	120
Elevation (MOA)	120	120
Maximum recoil (G's)	0.308	0.308
Battery type	CR2032	CR2032
Battery life (hours)	12-440	12-440
Battery voltage (V)	3	3
Operating temperature (°F)	0-120	0-120
Dimensions, in/mm	4.56 x 2.44 x 2.83 116 x 62 x 72	4.64 x 2.44 x 4.52 118 x 62 x 115
Weight (oz)	9.4	10.8

## OPERATING WINDAGE AND ELEVATION ADJUSTMENTS

In order to make windage and elevation adjustments:

1. Remove the caps covering the windage and elevation adjustments (6).
2. The windage and elevation adjustments are 1 MOA, meaning that 1 click moves the point of impact 1 inch at 100 yards. Adjustments can be both felt and heard allowing the shooter to make adjustments without looking at the dials.
3. Once adjustments are complete, screw the windage and elevation caps onto the adjustments.



## INSTALLING THE BATTERY

The Firefield Agility 1x30 Hunting Dot Sight (FF26030), and Firefield Agility 1x30 Shotgun Dot Sight (FF26031) are powered by 1 CR2032. Should the reticle or laser grow dim or not illuminate, the battery needs to be replaced. To install a new battery:

1. Unscrew the battery cap (5) counterclockwise.
2. Remove the batteries.
3. Insert new batteries with the positive (+) side facing up.
4. Screw the battery cap clockwise. Do not over tighten.

## **BORESIGHTING THE RED DOT SIGHT**

Boresighting and test firing should be performed safely on a firing range. Laser boresights are a quick and accurate method to sighting in red dot sight. Below is listed the traditional method of boresighting.

1. When mounting the red dot sight on a bolt action rifle, remove the bolt; or when mounting to a semi automatic rifle, disassemble the rifle until there is a straight line of sight through the bore.
2. Use a target at least twenty yards to fifty yards away when sighting in the red dot sight. Look through the bore of the weapon and locate the bull's-eye of the target.
3. Sight in the target through the bore and then make windage and elevation adjustments (see "Operating Windage and Elevation Adjustments" for instructions) to the red dot sight until the reticle is centered on the bull's-eye.

To verify the red dot sight is accurately sighted in, always fire a three-shot test group at 100 yards.

4. If you are still off center, make the necessary amount of adjustments to move the reticle to the center of the target.
5. Again fire a three-shot test group, and use the center of the group to determine final adjustments.

### **FEATURES:**

- Red or green reticle illumination
- Parallax corrected optical system
- Lightweight and durable
- Compact design
- Hand adjustable windage and elevation
- Flip up caps (FF2603 I works with semiauto and pump action Remington 870/1100/1187)

### **ACCESSORIES:**

- Battery

## INSTALLATION FOR FF26030

It is recommended to have the red dot sight mounted by a professional gunsmith. However, if attempting to mount the red dot sight without professional assistance, please read and strictly adhere to the following directions.

1. The Red Dot Sight comes with a weaver/picatinny mount.
2. Unload the weapon. Remove the bolt/firing pin to ensure the weapon is incapable of firing.
3. Install the red dot sight onto a Weaver or picatinny base. Tighten the mounting screw (7) between 45 - 65 inch pounds of torque.
4. Once the alignment is checked, tighten the mounting screw. Take care not to over tighten the screw.
5. Ensure the red dot sight provides the desired eye relief by moving the weapon into the shooting position.
6. Check that the red dot sight is evenly mounted, and boresight the sight.

## INSTALLATION FOR FF2603 I

It is recommended to have the red dot sight mounted by a professional gunsmith. However, if attempting to mount the red dot sight without professional assistance, please read and strictly adhere to the following directions.

Tools Needed:

- 3mm Allen wrench
- 4mm Allen wrench
- Punch
- Hammer

Installation Instructions:

1. Before you begin, check to make sure the weapon is unloaded.
2. Using the punch (or Allen wrench) and hammer, gently tap the two pins above the trigger assembly until they are free. This will cause the trigger assembly to come loose, use caution to prevent it from falling out.
3. Remove the two bolts on the shotgun rail with the Allen wrenches (4mm for rear bolt, 3mm for front bolt). Next, slide the mount (7) of the red dot sight over the top of the weapon and align the holes in the rail with the holes above the trigger assembly.
4. Insert the included bolts into the holes and tighten them with the Allen wrenches until they meet the other side of the Shotgun Rail and are snug. Do not over tighten.