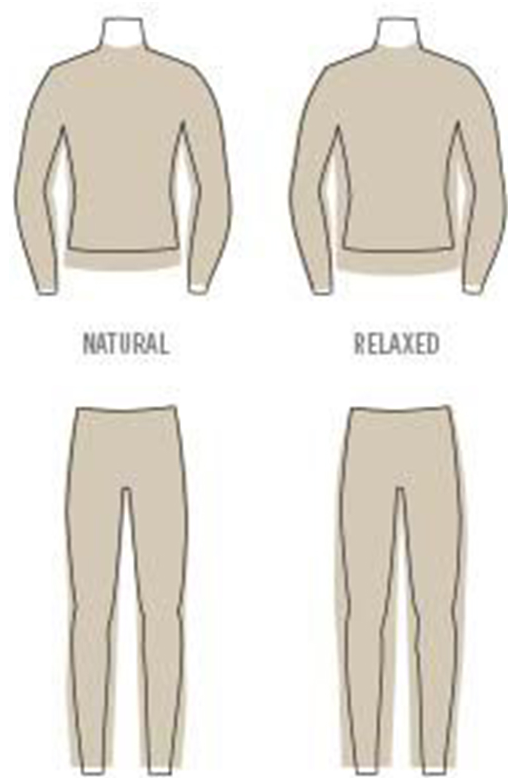


FIT CHART

RELAXED: Our classic fit, generous through the chest and waist, with roomy sleeves for maximum airflow and range of motion

NATURAL: A closer fit to the body to the chest and tapering to the hem, with careful attention to maintaining mobility and reach



*Men's Tall shirt body length and shirt arm length are 2X longer than Regular.

Men's Tops Sizing Chart (Inches)

Alpha Size	XS	S	M	L	XL	XXL
Chest	33-35	36-38	39-41	42-44	45-47	48-50
Neck	15 ¹ / ₄	15 ³ / ₄	16 ¹ / ₂	17 ¹ / ₄	18	19 ¹ / ₈
Center Back Arms Length	31	32	33	34	35	36